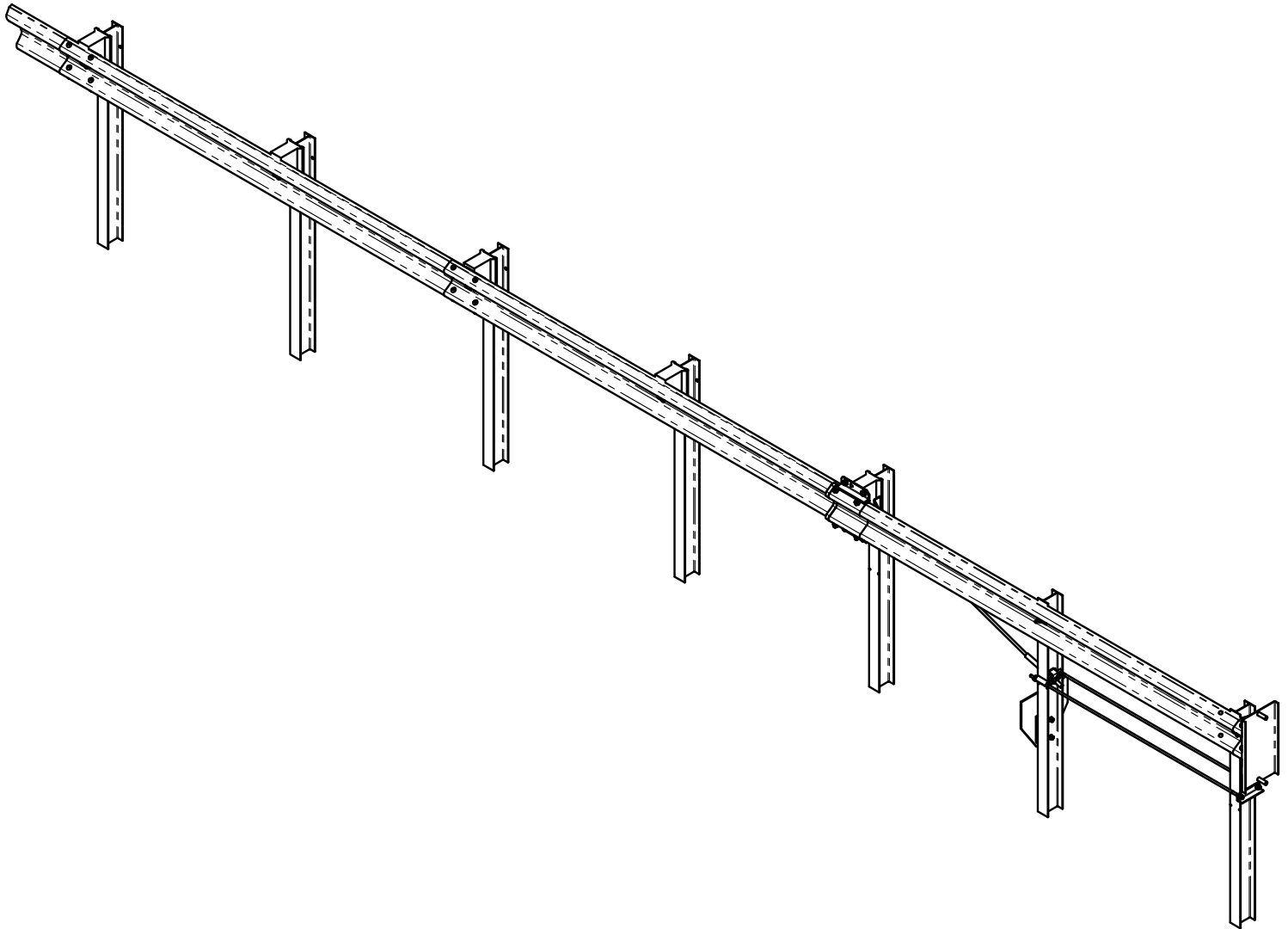


X-LITE® TANGENT

NCHRP 350 TL-3 Redirective, Gating, End Terminal



BARRIER SYSTEMS®

BY LINDSAY



Installation Manual

X-LITE TANGENT END TERMINAL

Preface ----- 3

System Overview ----- 3

Before Installation ----- 3

Limitations and Warnings ----- 3

Preparation ----- 4

Soil Conditions ----- 4

Before Starting ----- 4

Required Tools ----- 4

Limited Warranty ----- 5

Parts Identification ----- 6

Step 1 - Assembling Components ----- 8

Step 2 - Post and Blockout Installation ----- 10

Step 3 - Install Ground Strut Assembly ----- 13

Step 4 - Hang Rails ----- 14

Step 5 - Install Impact Head ----- 17

Final Inspection Checklist ----- 20

APPENDICES

Appendix A - System Configuration Drawings ----- 21

Preface

The X-Lite Guardrail End Terminal Tangent System incorporates the latest roadside safety technologies and engineering processes.

As with any roadside safety device, the X-Lite System must be installed in accordance with the manufacturer's specifications to ensure proper performance. Thoroughly review and fully understand the installation instructions and product limitations before starting the installation. Do not start the installation without the proper plans and tools required.

System Overview

The X-Lite System is a re-directive, gating end terminal designed for shielding the ends of guardrail systems. The system offers exceptional vehicle control, energy absorbing capabilities in head on impacts, and is re-directive starting at post 3. The X-Lite is comprised of a head unit, specially designed crimped posts, tension rods, cable assembly, slider assembly, and other standard guardrail components.

Before Installation

Placement and use of the X-Lite System should be done in accordance with the guidelines and recommendations set forth in the "AASHTO Roadside Design Guide," FHWA memoranda, and other state and local standards.

Depending on the application and the circumstances at the site, installation should take an experienced two person crew with proper tools approximately two hours to complete.

The X-Lite System is a highly engineered safety device made up of a relatively small number of parts. It is available in both tangent and flared versions. Before starting installation ensure that one is familiar with the make up of the system that is being installed. Prior to installation, ensure that proper manuals and components are on site.

Limitations and Warnings

The X-Lite System has been rigorously tested and evaluated per the recommendations in the National Cooperative Highway Research Program Report 350 (NCHRP Report 350) guidelines for end terminals and crash cushions. The impact conditions recommended in NCHRP Report 350 are intended to address in-service collisions.

When properly installed and maintained, the system is capable of stopping, containing, and re-directing impacting vehicles in a predictable and safe manner under NCHRP Report 350 impact conditions. Vehicle impacts that vary from the NCHRP Report 350 impact conditions for gating, re-directive end terminals may result significantly different than those experienced in testing.

Vehicle impact characteristics different than or in excess of those encountered in NCHRP Report 350 testing (speed and angle) may result in system performance that may not meet NCHRP Report 350 evaluation criteria.

If you need additional information, or have questions about the X-Lite System, please call the Lindsay Transportation Solutions Customer Service Department at (888) 800-3691 (U.S. toll free) or (707) 374-6800.

Preparation

Before installing the X-Lite System, ensure that all materials required for the system are on site and have been identified.

Soil Conditions

The X-Lite has been designed to be installed in soil that meets or exceeds the AASHTO “standard soil” specification. If rock or stiff soil is encountered, the posts may be installed by augering and backfilling the hole. Extra care must be taken to prevent settlement or lateral displacement of the post. Backfill material shall be compacted to optimum compaction.

Before Starting

For all applications, begin the installation from the trailing / back end of the system where it joins the standard guardrail system at post 7.

Required Tools

The system uses standard tools required to install typical guardrail; the list below is a general recommendation.

- Post driver
- Tape measure
- String line
- Hammer
- Stakes
- Pry Bar
- Crescent Wrench
- Vice Grips or Clamps
- 1-5/8” [42 mm] Wrench
- ½” Ratchet
- 1-1/4” [32 mm] Socket
- Air Impact Wrench (Optional)
- Pick Axe
- Pipe Wrench or Large Pliers
- Torque wrench
(capable of applying 60 ft. lbs. torque)

Note: The tools list is a general recommendation. Depending on the specific characteristics of the job site, more or less tools may be necessary. The tools listed are for US/Imperial fasteners. If metric hardware is used, use metric equivalents for the hardware as required.



The picture of the X-Lite System above illustrates how the System is referred to throughout this manual.



Required Tools



STANDARD LIMITED WARRANTY

Lindsay Transportation Solutions, Inc. "LTS" (formerly Barrier Systems) has tested the impact performance of its barriers and crash cushion systems, and other highway safety hardware under controlled conditions, however, LTS does not represent nor warrant that the results of those controlled conditions would necessarily avoid injury to persons or property. LTS EXPRESSLY DISCLAIMS ANY WARRANTY OR LIABILITY FOR CLAIMS ARISING BY REASONS OF DEATH OR PERSONAL INJURY OR DAMAGE TO PROPERTY RESULTING FROM ANY IMPACT, COLLISION OR HARMFUL CONTACT WITH THE PRODUCTS OR NEARBY HAZARDS OR OBJECTS BY ANY VEHICLE, OBJECTS OR PERSONS.

LTS warrants that any product or component part manufactured by LTS will be free from defects in material or workmanship. LTS will replace free of cost any Product or component part manufactured by LTS that contains such a defect.

THE FOREGOING WARRANTY IS IN LIEU OF AND EXCLUDES ALL OTHER WARRANTIES NOT EXPRESSLY SET FORTH HEREIN, WHETHER EXPRESS OR IMPLIED BY OPERATION OF LAW OR OTHERWISE, INCLUDING BUT NOT LIMITED TO ANY IMPLIED WARRANTIES OF MERCHANTABILITY OR FITNESS FOR A PARTICULAR PURPOSE.

LTS' LIABILITY UNDER THIS WARRANTY IS EXPRESSLY LIMITED TO REPLACEMENT FREE OF COST (IN THE FORM AND UNDER THE TERMS ORIGINALLY SHIPPED), OR TO REPAIR OR TO MANUFACTURE BY LTS, PRODUCTS OR PARTS NOT COMPLYING WITH LTS SPECIFICATIONS, OR, AT LTS' ELECTION, TO THE REPAYMENT OF AN AMOUNT EQUAL TO THE PURCHASE PRICE OF SUCH PRODUCTS OR PARTS, WHETHER SUCH CLAIMS ARE FOR BREACH OF WARRANTY OR NEGLIGENCE. LTS SHALL NOT BE LIABLE FOR ANY INCIDENTAL, CONSEQUENTIAL OR SPECIAL LOSSES, DAMAGES OR EXPENSES OF ANY KIND, INCLUDING, WITHOUT LIMITATION, ANY SUCH LOSSES, DAMAGES OR EXPENSES ARISING DIRECTLY OR INDIRECTLY FROM THE SALE, HANDLING OR USE OF THE PRODUCTS FROM ANY OTHER CAUSE RELATING THERETO, OR FROM PERSONAL INJURY OR LOSS OF PROFIT.

Any claim by the Buyer with reference to Products sold hereunder for any cause shall be deemed waived by the Buyer unless LTS is notified in writing, in the case of defects apparent on visual inspection, within ninety (90) days from the delivery date, or, in the case of defects not apparent on visual inspection, within twelve (12) months from the said delivery date. Products claimed to be defective may be returned prepaid to LTS' plant for inspection in accordance with return shipping instructions that LTS shall furnish to the Buyer forthwith upon receipt of the Buyer's notice of claim. If the claim is established, LTS will reimburse that Buyer for all carriage costs incurred hereunder.

The forgoing warranty benefits shall not apply to (i) any Products that have been subject to improper storage, accident, misuse or unauthorized alterations, or that have not been installed, operated and maintained in accordance with approved procedures and (ii) any components manufactured by the Buyer.

W030587 Rev. 8

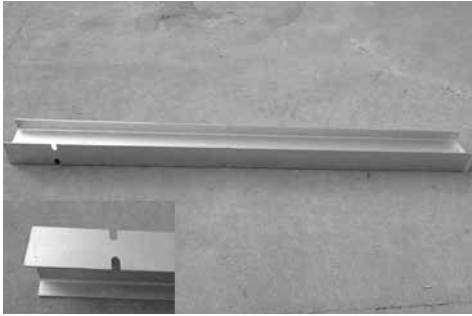
revised February 4, 2013



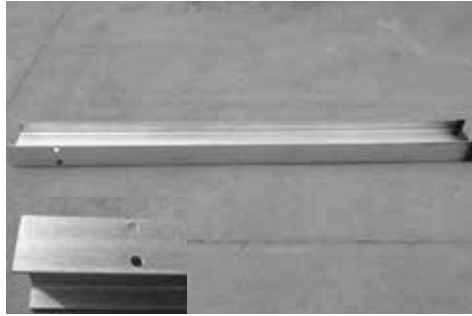
180 River Road • Rio Vista, CA 94571 • Tel. +1 (707) 374-6800 • Fax. +1 (707) 374-6801

Parts Identification

A Complete Bill of Materials for Systems and Kits Can be Found in [Appendix A](#)



Crimp Post #1 (QTY. 1)
BSI-1310024-00



Crimp Post #3 (QTY. 1)
BSI-1310027-00



Post II
BSI-1012086-00



Line Post (QTY. 3)*
BSI-1012078-00



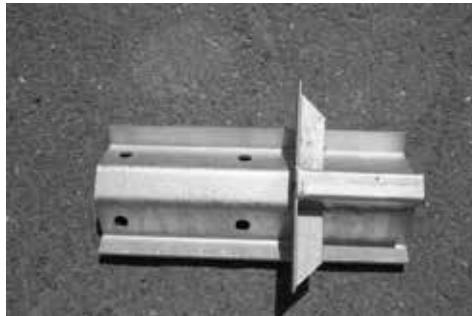
Impact Head
BSI-1012103-00



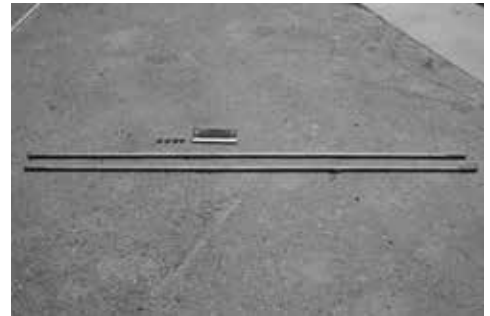
Slider Panel (Front)
BSI-1012093-00



Slider Panel (Back)
BSI-1012096-00



Slider Bracket
BSI-1012090-00



Ground Strut BSI-1012097-00 (QTY. 2), Nut 4001116 (QTY. 4), Angle BSI-1012098-00 (QTY. 1)



Cable Anchor Assembly
BSI-1012104-00



Shear Bolt Kits (8 Yellow Bolts per Kit)
K080123



Square Washer (Used on Post 1)
BSI-1102027-00

*** Denotes Shipped With Full System Only**

Parts Identification

A Complete Bill of Materials for Systems and Kits Can be Found in [Appendix A](#)



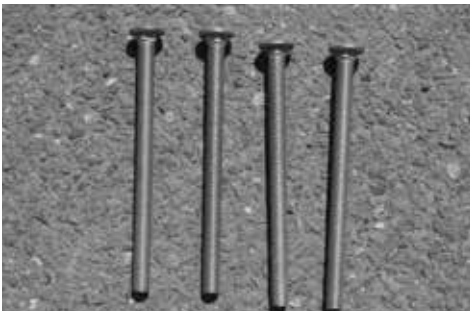
Blockouts (QTY. 4)*
B090534



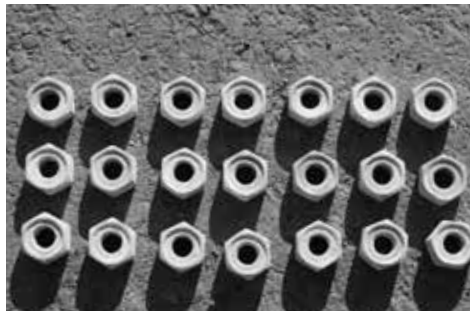
Guardrail Bolts (QTY. 16)*
4001115



5/8" x 2" Guardrail Bolt (For Post 1 & 2)
(QTY. 2)* 2001758



5/8" x 10" Guardrail Bolt (QTY. 4)*
2001840



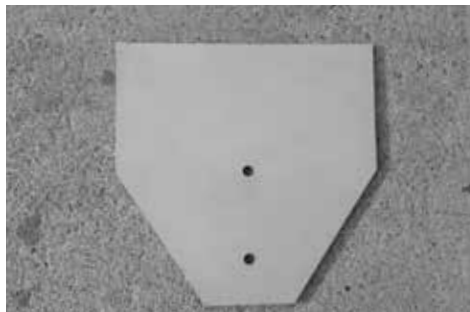
Guardrail Nut (QTY. 22)*
4001116



1" Washer (For Slider Panel-Back & Cable Assy.)* (QTY. 2) 2001580



W-Beam Guardrail (QTY. 3)*
4000443



Soil Plate
BSI-1312100-00



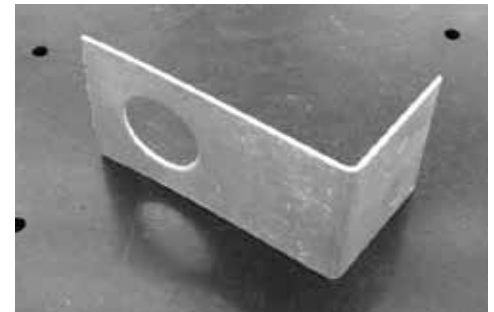
5/8" x 3 1/2" Bolt (Used on Soil Plate)
(QTY. 2) 2000220



5/8" Washer (Used on Soil Plate)
(QTY. 4) 2001636



5/8" Nut (Used on Soil Plate)
(QTY. 2) 2000312



L-Bracket
(used on cable at Post 2) BSI-1303005-00

*** Denotes Shipped With Full System Only**

Step 1 – Assembling Components

Components required:

- (1) Post II – BSI-1012086-00
- (1) Soil Plate – BSI-1312100-00
- (2) W-Beam – 4000443
- (1) Slider Panel (Front) – BSI-1012093-00
- (1) Slider Bracket – BSI-1012090-00

Hardware Required:

- (2) 5/8" x 3 1/2" Bolt - 2000220
- (8) 5/8" x 1 1/4" Guardrail Bolt - 4001115
- (4) 5/8" Washer - 2001636
- (2) 5/8" Nut - 2000312
- (8) 5/8" Guardrail Nut - 4001116

Some components require assembly and it is recommended that this step be completed prior to the start of the system assembly.

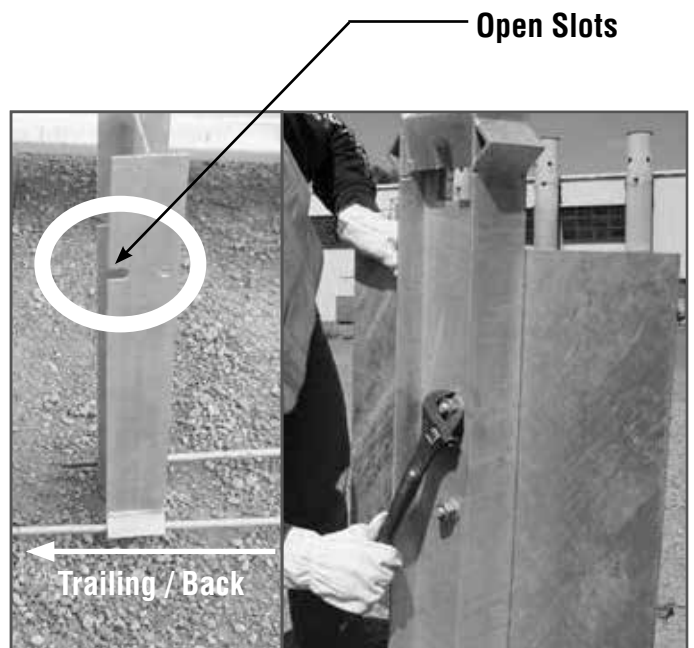
Post II Assembly:

1. Attach the soil plate to the trailing / back side of Post II using two (2) 5/8" x 3 1/2" bolts, washers (4), and nuts (2). The trailing / back end of the post is identified by the open slots on the top of the post.

The bolts should be installed from back to front so that the head of the bolts rests on the soil plate.

Depending on your post driver equipment, Post 2 may need to be partially driven before this step can be accomplished.

Notes:



Attach Soil Plate to Post II

Slider Bracket and Panel Assembly:

2. Attach the slider bracket to the inside of the approach / front end of rail 2 using four (4) 5/8" x 1 1/4" guardrail bolts.

Bolts should be installed with the bolt head on the outside and the nuts the inside.

Note: When properly installed, a portion of the bracket will stick out of the rail.

3. Attach the Slider Panel (Front) to the outside of the trailing / back end of rail 1 using four (4) 5/8" x 1 1/4" guardrail bolts.

Bolts should be installed with the bolt head on the inside and the nuts on the outside.

The angled portion of the Slider Panel should extend beyond the end of the rail and should face the trailing / back of the system when assembled in step 18.



Attach Slider Bracket to Rail 2.



Attach Slider Panel (Front) to Rail 1.

**Angled Portion
Extends Beyond the
End of the Rail.**

Step 2 – Post and Blockout Installation

Components required:

- (1) Crimp Post w/ Slots (Post 1)
- BSI-1310024-00
- (1) Crimp Post w/ Holes (Post 3)
- BSI-1310027-00
- (1) Post II Assembly with Soil Plate
- (3) Line Post – BSI-1012078-00
- (4) Blockout – B090534
- (1) Slider Panel (Back) – BSI-1012096-00

Hardware Required:

- (2) 5/8" x 10" Guardrail Bolt - 2001840
- (2) 5/8" Guardrail Nut - 4001116
- (1) 1" Washer - 2001580

Always start the installation at the existing w – beam barrier and assemble the system toward the impact head.

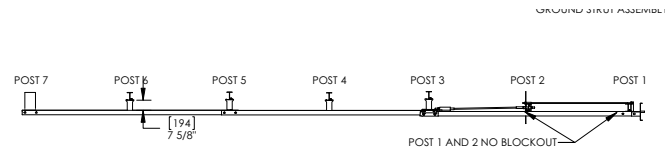
When driving the posts into stiff/rocky soil, place close attention not to bend the posts. If rock or stiff soil is encountered, the posts may be installed by augering and backfilling the holes. Extra care must be taken to prevent settlement or lateral displacement of the post. Backfill material shall be compacted to optimum compaction.

4. Begin by running a string line from the existing posts in a tangent position.

Note: The X-LITE can be installed with an offset of 0 - 24" (0 - 600 mm) over the length of the system.

Note: The front of posts 3-6 will be 7 5/8" (195mm) from the backside of rails 2 and 3 as blockouts are used. Posts 1 and 2 do not require blockouts and will align with the backside of rail 1. Post 3 requires up to an additional 2" (50mm) offset away from the rail to allow space for the slider assembly. (See Step 5.)

Notes:



Post Identification



Existing Trailing / Back Guardrail



Post Layout

5. Begin installing the posts at standard highway post spacing, 75" (1905mm) and post height, 28 1/4" (720mm) or 31 3/4" (805mm).. Post spacing and post height are found on drawing BSI-1012105-00 in Appendix A.

Post 4-6: Line Posts

Note: if you are installing a 50 FT. system, the systems will have an additional 2 posts and an additional section of guardrail. Please reference Appendix A for detail of a 50 FT. system.

Post 3: Crimped Post

Offset Post 3, up to 2" (50mm) back from the string line to allow sufficient space for the slider bracket assembly.

Post 3 is identified by the post having a crimp and holes on one side of the post only. These holes are used to mount the blockout and slider panel (back) on a later step. In addition, Post 3 can be easily identified by having black paint near the bottom.

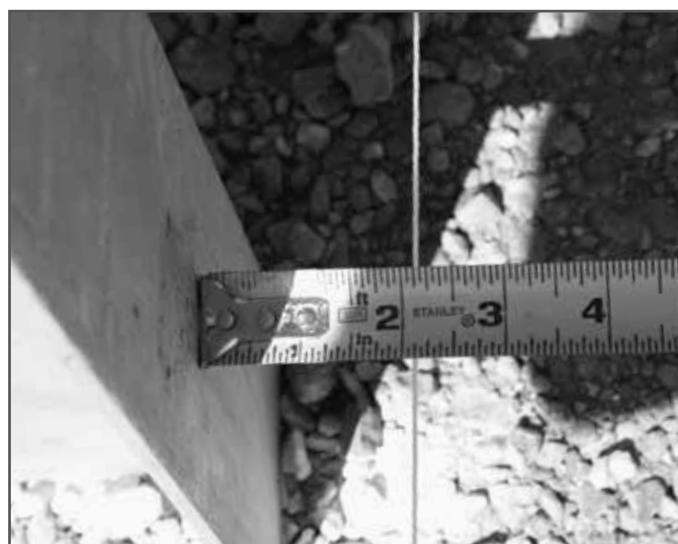
Post 2: Post II Assembly with Soil Plate

Soil Plate should be on the trailing / back side of the system.

Post 2 does not require a blockout, therefore, align the post with the backside of the rail. Position the outside edge of the post roughly 8" (200mm) from the string line on the rail side of the string.

Depending on your post driver equipment, it may be necessary to partially drive Post 2 prior to attaching the Soil Plate. Begin to drive Post 2 approximately 18" (450mm), more if necessary. If the post is driven more than 18" (450mm) it will be necessary to use a pick ax or other digging tool to remove some of the soil in order to install the soil plate.

Once the soil plate is installed, continue driving the post to the desired height.



Post 3 Offset



Drive Post 2

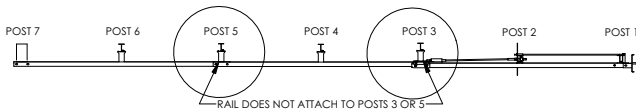
Post 1: Crimped Post

Post 1 does not require a blockout, therefore, align the post with the backside of the rail. Position post roughly 2" (50mm) from the string line on the rail side of the string.

Post 1 is identified by the post having a crimp and slots instead of holes. These slots are used to bolt the guardrail on a later step. In addition, Post 1 can be easily identified by having yellow paint near the bottom.

6. Install blockouts on posts 3-6. Blockouts at posts 3 and 5 must be bolted on before hanging the rails.
7. At post 5, attach the blockout using the 5/8" x 10" bolt. Secure blockout using the approach / front hole on the post. The rail does not attach at post 5.

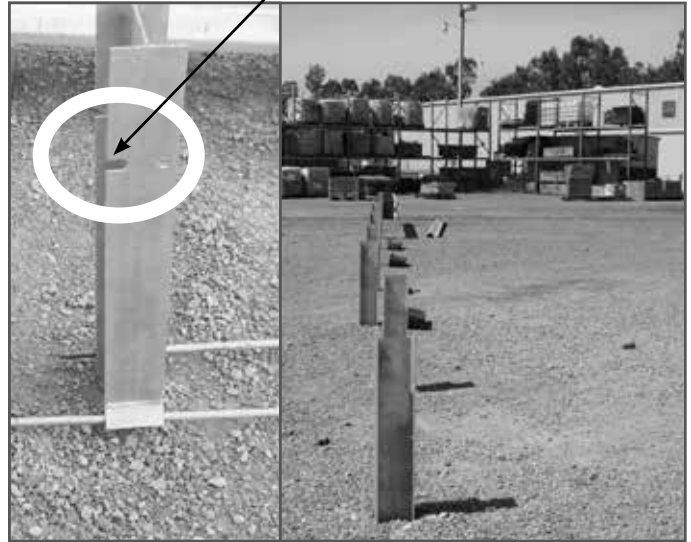
See diagram below for post identification.



8. At post 3, attach blockout and slider panel (back) using the 5/8" x 10" bolt and 1" washer. The slot on the slider panel should point toward the front of the system. Secure blockout using the approach / front hole on the post.

Blockouts at posts 4 and 6 are secured when the rail is bolted to the posts.

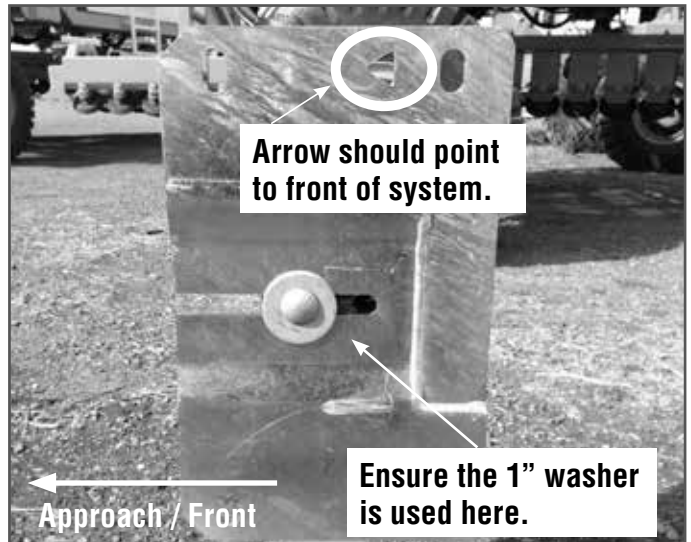
Open Slots



Installed Posts



Install Blockout at Post 5



Slider Panel (Back) and Blockout on Post 3

Step 3 – Install Ground Strut Assembly

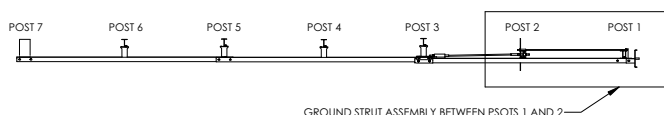
Components required:

- (2) Ground Strut Tension Rods – BSI-1012097-00
- (1) Ground Strut Angle – BSI-1012098-00

Hardware Required:

- (4) 5/8" Guardrail Nut - 4001116

9. Install ground strut tension rods between posts 1 and 2 by sliding the rods through the openings on the bottom of post 2.



10. Secure the rods at post 1 by passing the rods through the small piece of angle with the angle sitting flush on the ground, just above the crimp on the post.

The small piece of angle will sit flush with the ground on 28" systems only. On 31" height systems, the small piece of angle will sit approximately 3" (75mm) off the ground.

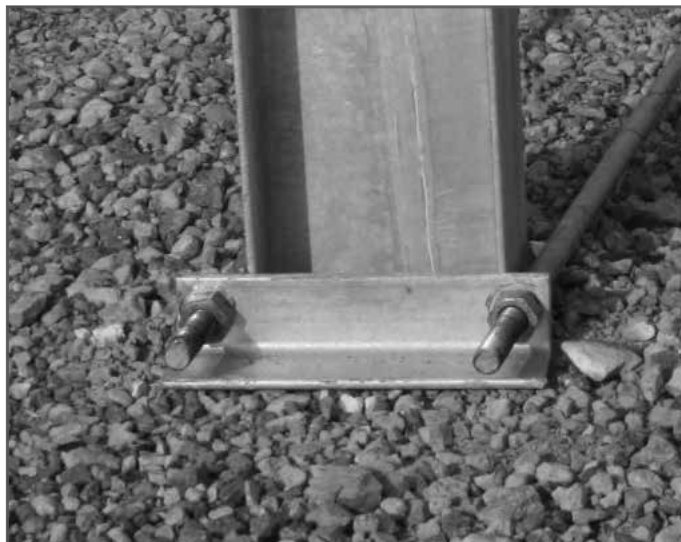
11. Tighten the rods so that there are equal amount of threads exposed at both ends of the rods.



Ground Strut Tension Rods Installed at Post 2



Ground Strut Tension Rods Attached at Post 1



Nuts Tightened on Ground Strut Tension Rods

Step 4 – Hang Rails

Components required:

- (3) W-Beam Guardrail - 4000443**

Hardware Required:

- (2) 5/8" x 10" Guardrail Bolt - 2001840
- (4) 5/8" x 1 1/4" Guardrail Bolt - 4001115
- (2) 5/8" x 2" Guardrail Bolt - 2001758
- (16) Shear Bolts – K080123 (Kit of 8; 2 Required)
- (5) 5/8" Guardrail Nut - 4001116
- (1) 5/8" Nut - 2000468
- (1) Square Washer – BSI-1102027-00

If installing a 50 ft system, the system uses 4 sections of rail in stead of 3.

If you are attaching to an MGS rail system, a transition guardrail panel is necessary.

Please reference Appendix A for 50 ft. or MGS system details.

Note: For the system to telescope properly, the forward most guardrail panel should always be on the outside.

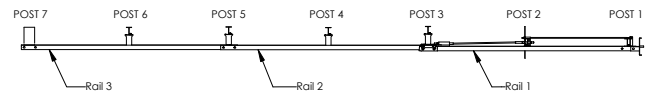
12. Before installing rail 3 ensure that the blackout at post 5 has already been bolted on. Attach rail 3 using the 5/8" x 10" bolt at post 6, pass bolt through the approach / front hole of post.

Note: Rail 3 is not attached to Post 5

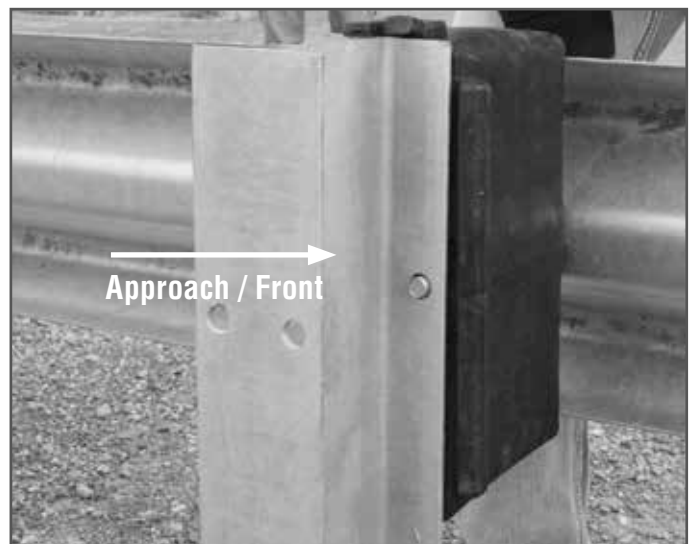
13. Splice rail 3 with the existing rail using the special yellow shear bolts. **DO NOT USE AN AIR IMPACT WRENCH TO TIGHTEN SHEAR BOLTS.**

Ensure that the 10" bolt used secure the rail and blackout passes through both sections of guardrail, blackout and post.

Notes:



Post Identification



Attach Rails to Posts



Shear Bolts at Rail 3 and 4 Connection

14. Before installing rail 2 ensure that the blackout and slider panel (back) at post 3 has already been bolted on. Attach rail 2 using the 5/8" x 10" bolt at post 4, pass bolt through the approach / front hole of post.



Attach Rail 2 at Post 4

15. Splice rail 2 with rail 3 using the special yellow shear bolts. The rails do not attach to post 5. **DO NOT USE AND AIR IMPACT WRENCH TO TIGHTEN SHEAR BOLTS.**



Shear Bolts at Rail 2 and Connection

16. Attach rail 1 using the 5/8" x 2" guardrail bolt at post 2, pass bolt through the trailing / back slot of post.



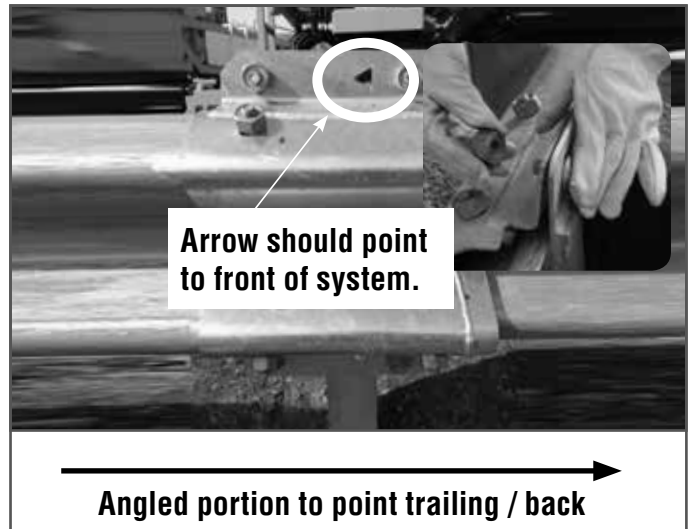
Connect Rails 1 and 2 at Slider Assembly

17. Connect rails 1 and 2 using 5/8" x 1 1/4" guardrail bolts by connecting the slider panel assembly (front and back parts together).

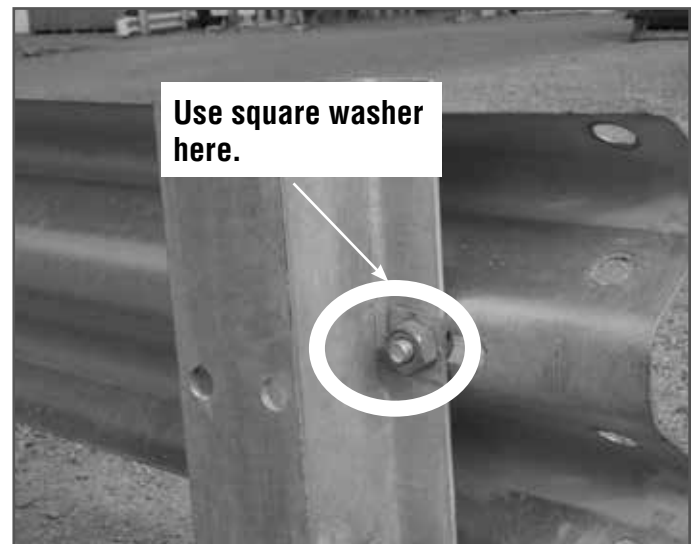
Ensure that the angled portion of the Slider Panel points toward the trailing / back end of the system.

18. Install the bolts from back to front with the nuts on the front side.

19. Attach rail 1 to post 1 using the 5/8" x 2" bolt and square washer, pass bolt through the approach / front slot of post.



Slider Panel Assembly Installed



Attach Rail 1 at Post 1



All Rails Installed

Step 5 – Install Impact Head

Components required:

- (1) Impact Head – BSI-1012103-00

Hardware Required:

- (4) 5/8" x 1 1/4" Guardrail Bolt - 4001115
- (4) 5/8" Guardrail Nut - 4001116

20. Install Impact Head to the approach / front end of rail 1 using 5/8" x 1 1/4" guardrail bolts.

Place Impact Head on the outside of the rail.

21. Install bolts from outside in with nuts on the inside.

Notes:



Install Impact Head at the End of Rail 1



Impact Head Installed

Step 6 – Install Cable

Components required:

- (1) Cable – BSI-1012104-00
- (1) 1” Washer - 2001580
- (1) L-Bracket - BSI-1301005-00

The cable is attached to the bottom of post 2 and at the slider bracket at post 3.

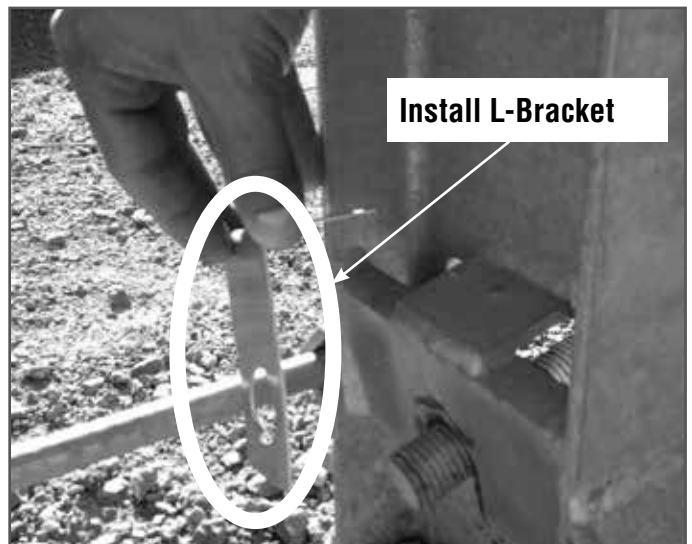
22. Begin to install the cable by passing the threaded end through the slot at the bottom of post 2.

23. Thread the nut so that 1” of the threads are protruding.

Ensure to install the small L-Shaped bracket and round washer included with the cable. This bracket and washer are critical components and help keep the cable engaged in the slot.

Proceed to thread the nut while not exposing any threads. This will ensure you can achieve the required to torque for the cable nut in a subsequent step.

Notes:



Install Cable at Post 2



L-Bracket installed at Post 2 Prior to Tightening

24. Pass the other end of the cable through the slider bracket at post 3.

Install the nut. Tightening of the cable should be done at the bottom of Post 2 in the following step.



Install Trailing / Back End of Cable Through Bracket at Post 3

25. Tighten the cable nut at Post 2. It will be necessary to use a pipe wrench or large pliers on the backside of the cable to hold it in place while tightening. If the cable is not held in place with a pipe wrench or large pliers, it will spin while you attempt to tighten the cable and you will not be able to tighten it.

Apply approximately 60 FT-Lb torque. Continue to tighten the cable nut until the cable is tight and the approximate torque is achieved.

When tightening, ensure that the L-Bracket does not shift, turn and move out of position.



Torque cable nut to 60 ft.-lb. at Post 2

Note: Standard BCT cables used on other systems may not require a specific torque on the cable nuts. The X-LITE® Tangent system requires a tensioned cable to maintain engagement in the slot on Post 2.

If a torque wrench is not available, use the following method to ensure cable is adequately tensioned:

Tighten cable nut until a maximum 1/2" cable deflection is measured at the midpoint when pressure is applied by hand.



Cable Installed

Final Inspection Checklist

Inspection Date	Inspection By:	Item
		Post 1 uses slotted holes
		Post 3, uses standard post holes
		Rail bolted at posts 1, 2, 4 and 6 only (7, 8 for 50 ft. system)
		Rails not bolted to posts at Posts 3 and 5
		Square washer used at Post 1
		Post 2, rail bolted using trailing / back slot on post
		Posts 1, 4, 6, rails bolted using approach / front hole on posts
		Rails 3 and 4 spliced using special yellow shear bolts
		Rails 2 and 3 spliced using special yellow shear bolts
		At Post 7, 10" bolt passes through both guardrail sections, block-out and post.
		Slider assembly properly assembled with bolts from back to front with nuts on the outside
		Angled position of Slider panel points toward the trailing / back end of the system.
		Arrows on slider should point toward the front of the system
		Cable bracket and washer installed on cable at Post 2
		Approximately 60 ft.-lb. torque applied to cable nut at Post 2
		No blockout on Post 1 or Post 2
		Tangent installation or with allowable offset from 0 - 24" (0 - 600mm) over length of the system

Appendix A - System Configuration

The X-Lite System has been tested per the National Cooperative Highway Research Program (NCHRP) Report 350 Test Level 3 and accepted for use on the National Highway System (NHS) by the Federal Highway Administration.

The X-Lite system is a gating, re-directive guardrail end terminal designed to attach to the ends of guardrail systems.

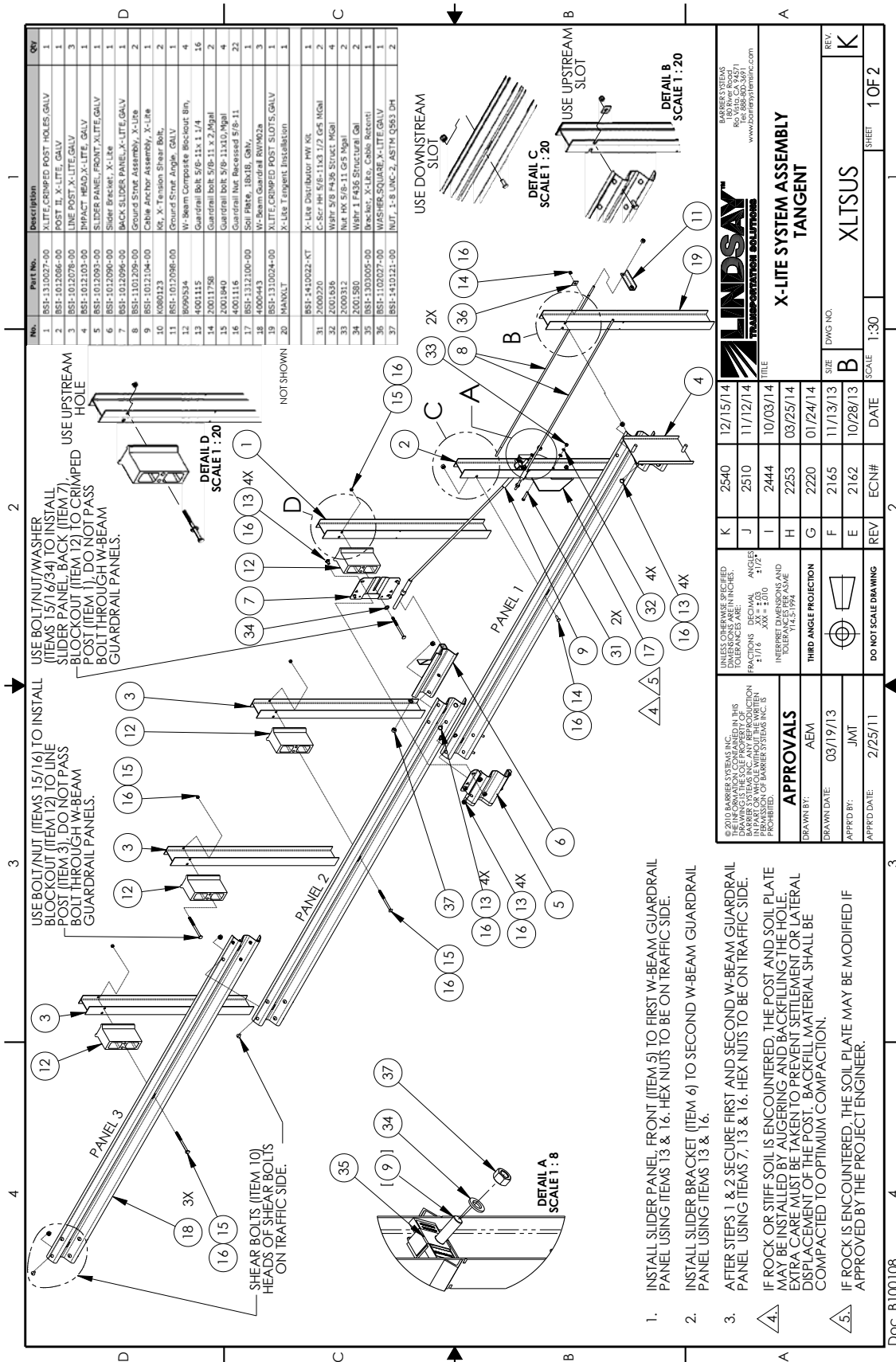
As with all crash cushions and end terminals, the X-Lite system requires appropriate clear zones in accordance with the AASHTO Roadside Design Guide, FHWA memoranda, and other state and local standards.

System drawings and bill of materials can be found on the following pages.

DRAWINGS

X-Lite System, Tangent, 37'-6" DWG# XLTSUS	22
Bill of Materials, 37'-6"	24
X-LITE System, 50 FT. DWG# XLTSUS-50	25
Bill of Materials, 50 FT	27
X-LITE System, Tangent, MGS, 37'-6" DWG# XLTSUS-MGS	28
Bill of Materials, MGS, 37'-6"	30
X-LITE Systems, Tangent, MGS, 50 FT. (Short Panel) DWG# XLTSUS-MGS50S	31
Bill of Materials, MGS, 50 FT., Short	33
X-LITE Systems, Tangent, MGS, 50 FT. (Long Panel) DWG# XLTSUS-MGS50L	34
Bill of Materials, MGS, 50 FT., Long	36

Appendix A - System Configuration, 37' 6"

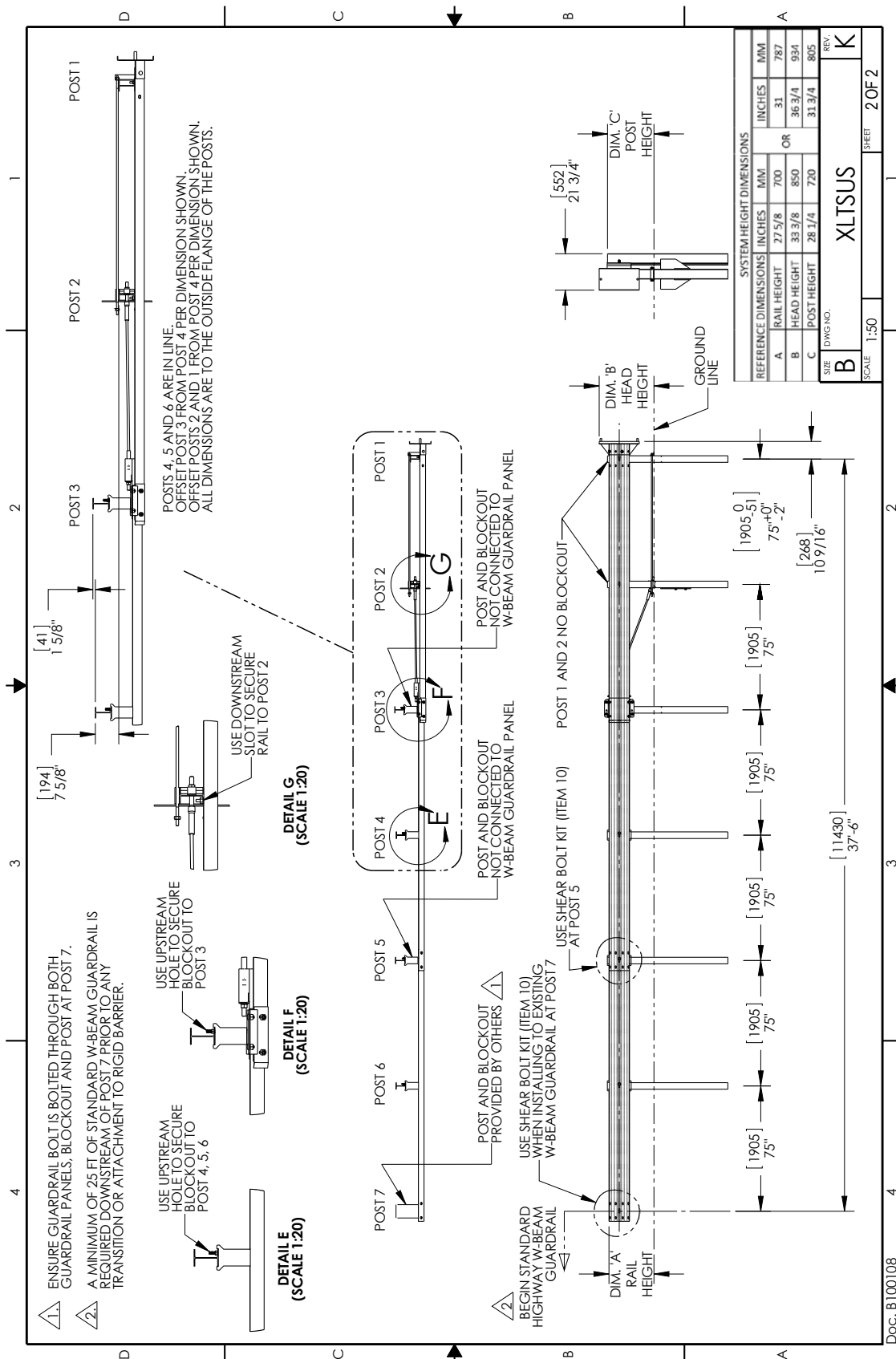


		BARBERS SYSTEMS 190 King Road Dallas, TX 75244 Tel: (888) 800-3691 www.barbersystems.com	
© 2010 BARBERS SYSTEMS, INC. THIS DRAWING IS THE SOLE PROPERTY OF BARBERS SYSTEMS, INC. NO PART OF THIS DRAWING IS TO BE REPRODUCED OR TRANSMITTED IN ANY FORM OR BY ANY MEANS, ELECTRONIC OR MECHANICAL, WITHOUT THE WRITTEN PERMISSION OF BARBERS SYSTEMS, INC.		UNLESS OTHERWISE SPECIFIED DIMENSIONS ARE IN INCHES. TOLERANCES ARE: FINISHES: DIMENSIONS: 1/16" - XX = ±.010 1/8" - XX = ±.015 1/4" - XX = ±.015 3/8" - XX = ±.015 1/2" - XX = ±.020 3/4" - XX = ±.020 1" - XX = ±.020 1 1/2" - XX = ±.020 2" - XX = ±.020 3" - XX = ±.020 4" - XX = ±.020 6" - XX = ±.020 8" - XX = ±.020 10" - XX = ±.020 12" - XX = ±.020 14" - XX = ±.020 16" - XX = ±.020 18" - XX = ±.020 20" - XX = ±.020 24" - XX = ±.020 30" - XX = ±.020 36" - XX = ±.020 48" - XX = ±.020 60" - XX = ±.020 72" - XX = ±.020 96" - XX = ±.020 120" - XX = ±.020 144" - XX = ±.020 168" - XX = ±.020 192" - XX = ±.020 216" - XX = ±.020 240" - XX = ±.020 264" - XX = ±.020 288" - XX = ±.020 312" - XX = ±.020 336" - XX = ±.020 360" - XX = ±.020 384" - XX = ±.020 408" - XX = ±.020 432" - XX = ±.020 456" - XX = ±.020 480" - XX = ±.020 504" - XX = ±.020 528" - XX = ±.020 552" - XX = ±.020 576" - XX = ±.020 600" - XX = ±.020 624" - XX = ±.020 648" - XX = ±.020 672" - XX = ±.020 696" - XX = ±.020 720" - XX = ±.020 744" - XX = ±.020 768" - XX = ±.020 792" - XX = ±.020 816" - XX = ±.020 840" - XX = ±.020 864" - XX = ±.020 888" - XX = ±.020 912" - XX = ±.020 936" - XX = ±.020 960" - XX = ±.020 984" - XX = ±.020 1008" - XX = ±.020 1032" - XX = ±.020 1056" - XX = ±.020 1080" - XX = ±.020 1104" - XX = ±.020 1128" - XX = ±.020 1152" - XX = ±.020 1176" - XX = ±.020 1200" - XX = ±.020 1224" - XX = ±.020 1248" - XX = ±.020 1272" - XX = ±.020 1296" - XX = ±.020 1320" - XX = ±.020 1344" - XX = ±.020 1368" - XX = ±.020 1392" - XX = ±.020 1416" - XX = ±.020 1440" - XX = ±.020 1464" - XX = ±.020 1488" - XX = ±.020 1512" - XX = ±.020 1536" - XX = ±.020 1560" - XX = ±.020 1584" - XX = ±.020 1608" - XX = ±.020 1632" - XX = ±.020 1656" - XX = ±.020 1680" - XX = ±.020 1704" - XX = ±.020 1728" - XX = ±.020 1752" - XX = ±.020 1776" - XX = ±.020 1800" - XX = ±.020 1824" - XX = ±.020 1848" - XX = ±.020 1872" - XX = ±.020 1896" - XX = ±.020 1920" - XX = ±.020 1944" - XX = ±.020 1968" - XX = ±.020 1992" - XX = ±.020 2016" - XX = ±.020 2040" - XX = ±.020 2064" - XX = ±.020 2088" - XX = ±.020 2112" - XX = ±.020 2136" - XX = ±.020 2160" - XX = ±.020 2184" - XX = ±.020 2208" - XX = ±.020 2232" - XX = ±.020 2256" - XX = ±.020 2280" - XX = ±.020 2304" - XX = ±.020 2328" - XX = ±.020 2352" - XX = ±.020 2376" - XX = ±.020 2400" - XX = ±.020 2424" - XX = ±.020 2448" - XX = ±.020 2472" - XX = ±.020 2496" - XX = ±.020 2520" - XX = ±.020 2544" - XX = ±.020 2568" - XX = ±.020 2592" - XX = ±.020 2616" - XX = ±.020 2640" - XX = ±.020 2664" - XX = ±.020 2688" - XX = ±.020 2712" - XX = ±.020 2736" - XX = ±.020 2760" - XX = ±.020 2784" - XX = ±.020 2808" - XX = ±.020 2832" - XX = ±.020 2856" - XX = ±.020 2880" - XX = ±.020 2904" - XX = ±.020 2928" - XX = ±.020 2952" - XX = ±.020 2976" - XX = ±.020 3000" - XX = ±.020 3024" - XX = ±.020 3048" - XX = ±.020 3072" - XX = ±.020 3096" - XX = ±.020 3120" - XX = ±.020 3144" - XX = ±.020 3168" - XX = ±.020 3192" - XX = ±.020 3216" - XX = ±.020 3240" - XX = ±.020 3264" - XX = ±.020 3288" - XX = ±.020 3312" - XX = ±.020 3336" - XX = ±.020 3360" - XX = ±.020 3384" - XX = ±.020 3408" - XX = ±.020 3432" - XX = ±.020 3456" - XX = ±.020 3480" - XX = ±.020 3504" - XX = ±.020 3528" - XX = ±.020 3552" - XX = ±.020 3576" - XX = ±.020 3600" - XX = ±.020 3624" - XX = ±.020 3648" - XX = ±.020 3672" - XX = ±.020 3696" - XX = ±.020 3720" - XX = ±.020 3744" - XX = ±.020 3768" - XX = ±.020 3792" - XX = ±.020 3816" - XX = ±.020 3840" - XX = ±.020 3864" - XX = ±.020 3888" - XX = ±.020 3912" - XX = ±.020 3936" - XX = ±.020 3960" - XX = ±.020 3984" - XX = ±.020 4008" - XX = ±.020 4032" - XX = ±.020 4056" - XX = ±.020 4080" - XX = ±.020 4104" - XX = ±.020 4128" - XX = ±.020 4152" - XX = ±.020 4176" - XX = ±.020 4200" - XX = ±.020 4224" - XX = ±.020 4248" - XX = ±.020 4272" - XX = ±.020 4296" - XX = ±.020 4320" - XX = ±.020 4344" - XX = ±.020 4368" - XX = ±.020 4392" - XX = ±.020 4416" - XX = ±.020 4440" - XX = ±.020 4464" - XX = ±.020 4488" - XX = ±.020 4512" - XX = ±.020 4536" - XX = ±.020 4560" - XX = ±.020 4584" - XX = ±.020 4608" - XX = ±.020 4632" - XX = ±.020 4656" - XX = ±.020 4680" - XX = ±.020 4704" - XX = ±.020 4728" - XX = ±.020 4752" - XX = ±.020 4776" - XX = ±.020 4800" - XX = ±.020 4824" - XX = ±.020 4848" - XX = ±.020 4872" - XX = ±.020 4896" - XX = ±.020 4920" - XX = ±.020 4944" - XX = ±.020 4968" - XX = ±.020 4992" - XX = ±.020 5016" - XX = ±.020 5040" - XX = ±.020 5064" - XX = ±.020 5088" - XX = ±.020 5112" - XX = ±.020 5136" - XX = ±.020 5160" - XX = ±.020 5184" - XX = ±.020 5208" - XX = ±.020 5232" - XX = ±.020 5256" - XX = ±.020 5280" - XX = ±.020 5304" - XX = ±.020 5328" - XX = ±.020 5352" - XX = ±.020 5376" - XX = ±.020 5400" - XX = ±.020 5424" - XX = ±.020 5448" - XX = ±.020 5472" - XX = ±.020 5496" - XX = ±.020 5520" - XX = ±.020 5544" - XX = ±.020 5568" - XX = ±.020 5592" - XX = ±.020 5616" - XX = ±.020 5640" - XX = ±.020 5664" - XX = ±.020 5688" - XX = ±.020 5712" - XX = ±.020 5736" - XX = ±.020 5760" - XX = ±.020 5784" - XX = ±.020 5808" - XX = ±.020 5832" - XX = ±.020 5856" - XX = ±.020 5880" - XX = ±.020 5904" - XX = ±.020 5928" - XX = ±.020 5952" - XX = ±.020 5976" - XX = ±.020 6000" - XX = ±.020 6024" - XX = ±.020 6048" - XX = ±.020 6072" - XX = ±.020 6096" - XX = ±.020 6120" - XX = ±.020 6144" - XX = ±.020 6168" - XX = ±.020 6192" - XX = ±.020 6216" - XX = ±.020 6240" - XX = ±.020 6264" - XX = ±.020 6288" - XX = ±.020 6312" - XX = ±.020 6336" - XX = ±.020 6360" - XX = ±.020 6384" - XX = ±.020 6408" - XX = ±.020 6432" - XX = ±.020 6456" - XX = ±.020 6480" - XX = ±.020 6504" - XX = ±.020 6528" - XX = ±.020 6552" - XX = ±.020 6576" - XX = ±.020 6600" - XX = ±.020 6624" - XX = ±.020 6648" - XX = ±.020 6672" - XX = ±.020 6696" - XX = ±.020 6720" - XX = ±.020 6744" - XX = ±.020 6768" - XX = ±.020 6792" - XX = ±.020 6816" - XX = ±.020 6840" - XX = ±.020 6864" - XX = ±.020 6888" - XX = ±.020 6912" - XX = ±.020 6936" - XX = ±.020 6960" - XX = ±.020 6984" - XX = ±.020 7008" - XX = ±.020 7032" - XX = ±.020 7056" - XX = ±.020 7080" - XX = ±.020 7104" - XX = ±.020 7128" - XX = ±.020 7152" - XX = ±.020 7176" - XX = ±.020 7200" - XX = ±.020 7224" - XX = ±.020 7248" - XX = ±.020 7272" - XX = ±.020 7296" - XX = ±.020 7320" - XX = ±.020 7344" - XX = ±.020 7368" - XX = ±.020 7392" - XX = ±.020 7416" - XX = ±.020 7440" - XX = ±.020 7464" - XX = ±.020 7488" - XX = ±.020 7512" - XX = ±.020 7536" - XX = ±.020 7560" - XX = ±.020 7584" - XX = ±.020 7608" - XX = ±.020 7632" - XX = ±.020 7656" - XX = ±.020 7680" - XX = ±.020 7704" - XX = ±.020 7728" - XX = ±.020 7752" - XX = ±.020 7776" - XX = ±.020 7800" - XX = ±.020 7824" - XX = ±.020 7848" - XX = ±.020 7872" - XX = ±.020 7896" - XX = ±.020 7920" - XX = ±.020 7944" - XX = ±.020 7968" - XX = ±.020 7992" - XX = ±.020 8016" - XX = ±.020 8040" - XX = ±.020 8064" - XX = ±.020 8088" - XX = ±.020 8112" - XX = ±.020 8136" - XX = ±.020 8160" - XX = ±.020 8184" - XX = ±.020 8208" - XX = ±.020 8232" - XX = ±.020 8256" - XX = ±.020 8280" - XX = ±.020 8304" - XX = ±.020 8328" - XX = ±.020 8352" - XX = ±.020 8376" - XX = ±.020 8400" - XX = ±.020 8424" - XX = ±.020 8448" - XX = ±.020 8472" - XX = ±.020 8496" - XX = ±.020 8520" - XX = ±.020 8544" - XX = ±.020 8568" - XX = ±.020 8592" - XX = ±.020 8616" - XX = ±.020 8640" - XX = ±.020 8664" - XX = ±.020 8688" - XX = ±.020 8712" - XX = ±.020 8736" - XX = ±.020 8760" - XX = ±.020 8784" - XX = ±.020 8808" - XX = ±.020 8832" - XX = ±.020 8856" - XX = ±.020 8880" - XX = ±.020 8904" - XX = ±.020 8928" - XX = ±.020 8952" - XX = ±.020 8976" - XX = ±.020 9000" - XX = ±.020 9024" - XX = ±.020 9048" - XX = ±.020 9072" - XX = ±.020 9096" - XX = ±.020 9120" - XX = ±.020 9144" - XX = ±.020 9168" - XX = ±.020 9192" - XX = ±.020 9216" - XX = ±.020 9240" - XX = ±.020 9264" - XX = ±.020 9288" - XX = ±.020 9312" - XX = ±.020 9336" - XX = ±.020 9360" - XX = ±.020 9384" - XX = ±.020 9408" - XX = ±.020 9432" - XX = ±.020 9456" - XX = ±.020 9480" - XX = ±.020 9504" - XX = ±.020 9528" - XX = ±.020 9552" - XX = ±.020 9576" - XX = ±.020 9600" - XX = ±.020 9624" - XX = ±.020 9648" - XX = ±.020 9672" - XX = ±.020 9696" - XX = ±.020 9720" - XX = ±.020 9744" - XX = ±.020 9768" - XX = ±.020 9792" - XX = ±.020 9816" - XX = ±.020 9840" - XX = ±.020 9864" - XX = ±.020 9888" - XX = ±.020 9912" - XX = ±.020 9936" - XX = ±.020 9960" - XX = ±.020 9984" - XX = ±.020 10000" - XX = ±.020	
APPROVALS DRAWN BY: AEM DRAWN DATE: 03/19/13 APPR'D BY: JMT APPR'D DATE: 2/25/11		TITLE X-LITE SYSTEM ASSEMBLY TANGENT	
DATE: 12/15/14 REV: K DATE: 11/12/14 REV: J DATE: 10/03/14 REV: I DATE: 03/25/14 REV: H DATE: 01/24/14 REV: G DATE: 11/13/13 REV: F DATE: 10/28/13 REV: E DATE: 10/28/13 REV: B		DWG NO. XLTLSUS SHEET 1 OF 2	

- INSTALL SLIDER PANEL, FRONT (ITEM 5) TO FIRST W-BEAM GUARDRAIL PANEL USING ITEMS 7, 13 & 16. HEX NUTS TO BE ON TRAFFIC SIDE.
 - INSTALL SLIDER BRACKET (ITEM 6) TO SECOND W-BEAM GUARDRAIL PANEL USING ITEMS 13 & 16.
 - AFTER STEPS 1 & 2 SECURE FIRST AND SECOND W-BEAM GUARDRAIL PANEL USING ITEMS 7, 13 & 16. HEX NUTS TO BE ON TRAFFIC SIDE.
- IF ROCK OR STIFF SOIL IS ENCOUNTERED, THE POST AND SOIL PLATE MAY BE INSTALLED BY AUGERING AND BACKFILLING THE HOLE. EXTRA CARE MUST BE TAKEN TO PREVENT SETTLEMENT OR LATERAL DISPLACEMENT OF THE POST. BACKFILL MATERIAL SHALL BE COMPACTED TO OPTIMUM COMPACTION.
- IF ROCK IS ENCOUNTERED, THE SOIL PLATE MAY BE MODIFIED IF APPROVED BY THE PROJECT ENGINEER.

Doc. B100108

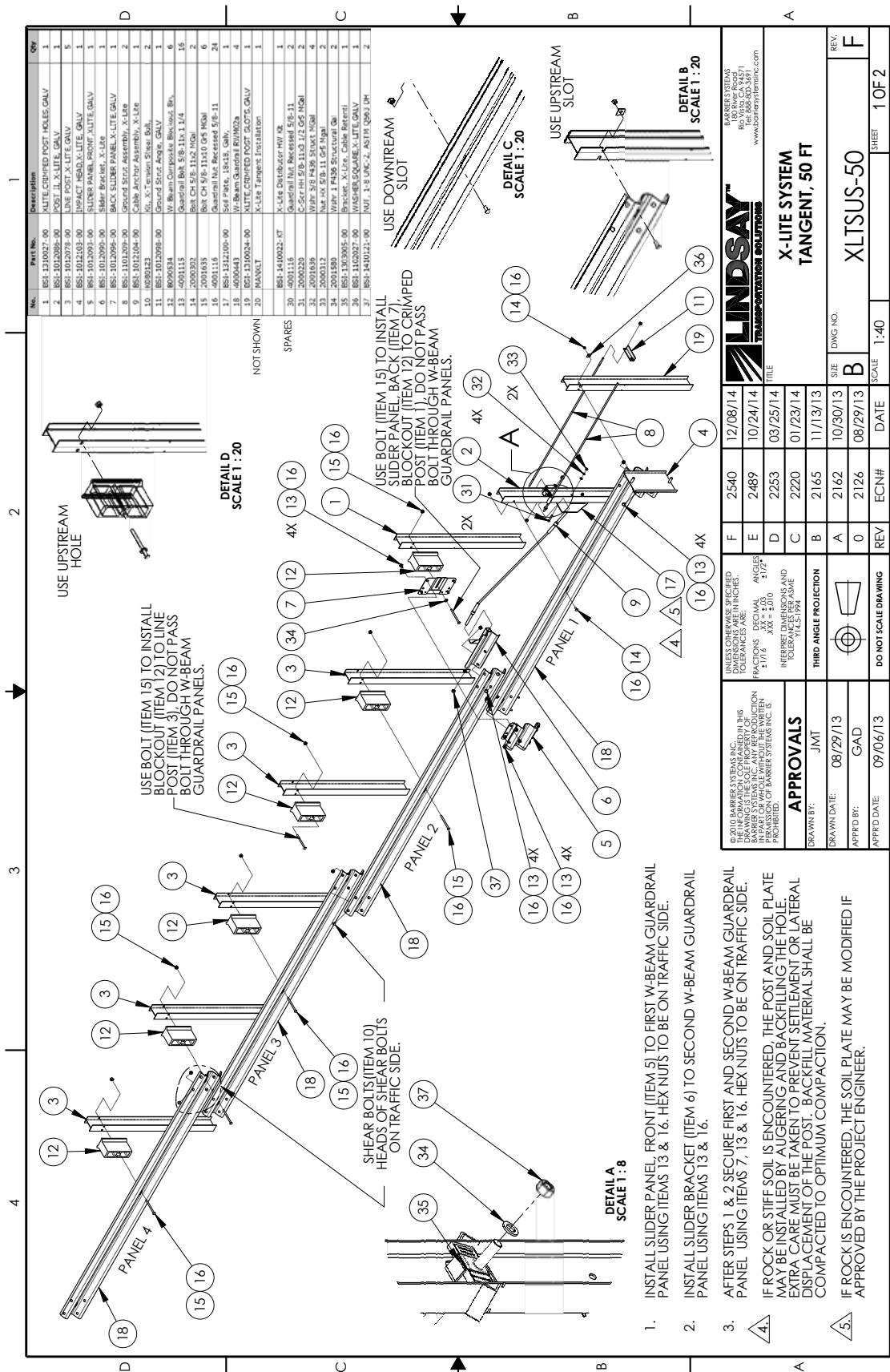
Appendix A - System Configuration, 37' 6"



Appendix A -Bill of Materials - X-Lite Tangent, 37' 6"

Item	Description	Full System	Kit Only
BSI-1310024-00	XLITE,CRIMPED POST SLOTS,GALV	1.00	1.00
BSI-1310027-00	XLITE,CRIMPED POST HOLES,GALV	1.00	1.00
BSI-1012086-00	POST II, X-LITE, GALV	1.00	1.00
BSI-1012078-00	LINE POST,X-LITE,GALV	3.00	-
BSI-1012103-00	IMPACT HEAD,X-LITE, GALV	1.00	1.00
BSI-1012093-00	SLIDER PANEL,FRONT,XLITE,GALV	1.00	1.00
BSI-1012090-00	Slider Bracket, X-Lite	1.00	1.00
BSI-1012096-00	BACK SLIDER PANEL,X-LITE,GALV	1.00	1.00
BSI-1012097-00	Ground Strut, X-Lite	2.00	2.00
BSI-1012098-00	Ground Strut Angle	1.00	1.00
BSI-1012104-00	Cable Anchor Assembly, X-Lite	1.00	1.00
K080123	Kit, X-Tension Shear Bolt,	2.00	2.00
BSI-1102027-00	WASHER,SQUARE,X-LITE,GALV	1.00	1.00
B090534	W-Beam Composite Blockout 8in,	4.00	-
4001115	Guardrail Bolt 5/8-11x 1 1/4	16.00	-
2001758	Guardrail Bolt 5/8-11 x 2"	2.00	-
2001840	Guardrail Bolt 5/8-11 x 10"	4.00	-
4001116	Guardrail Nut Recessed 5/8-11	24.00	2.00
2001580	Wshr 1" F436 Structural	2.00	2.00
4000443	W-Beam Guardrail RWM02a	3.00	-
BSI-1312100-00	Soil Plate	1.00	1.00
2000220	C-Scr HH 5/8-11x3 1/2	2.00	2.00
2001636	Wshr 5/8 F436	4.00	4.00
2000312	Nut HX 5/8-11	2.00	2.00
BSI-1303005-00	Bracket, X-Lite, Cable Retenti	1.00	1.00

Appendix A - System Configuration, 50'



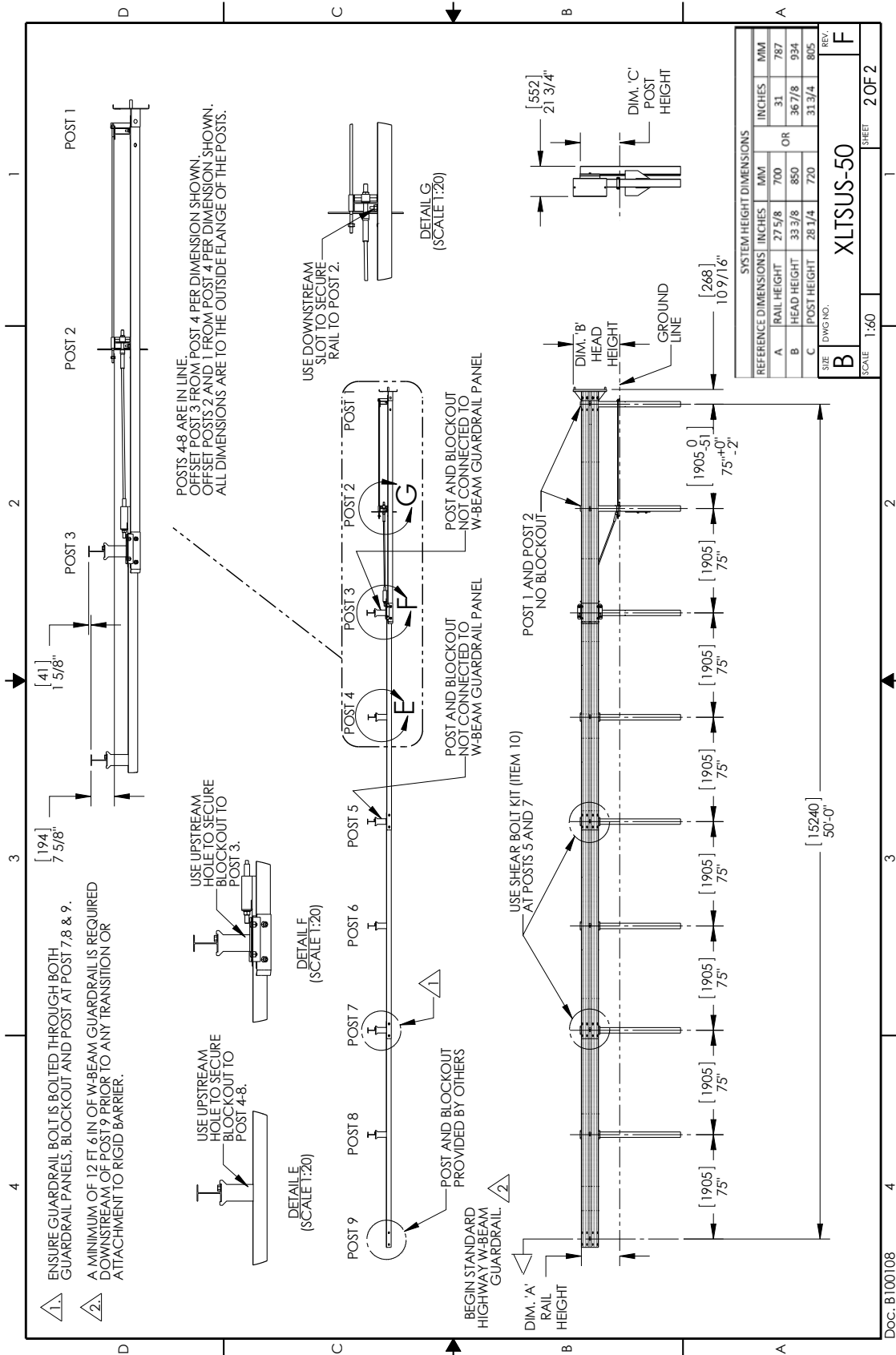
Qty	Part No.	Description	Qty
1	051-1310027-00	NUTTE-CRIMPED POST HOLES GALV	1
2	051-10120056-00	POST JIL X-LITE GALV	5
3	051-1012078-00	LINE POST X-LITE GALV	1
4	051-1012101-00	IMPACT HEAD X-LITE GALV	1
5	051-1012091-00	SLIDER PANEL FRONT X-LITE GALV	1
6	051-1012095-00	SLIDER BRACKET X-LITE	1
7	051-1012096-00	BACK SLIDER PANEL X-LITE GALV	1
8	051-1012097-00	BACK SLIDER BRACKET X-LITE	1
9	051-1012104-00	Cable Jacket Assembly, X-Lite	1
10	02001123	Kit, X-Lite, Slender Shear Bolt	2
11	051-10120990-00	Ground Stud, Angle, GALV	1
12	80005234	W-Beam Composite Bracket, 8in.	6
13	-0001115	Guardrail Bolt, 5/8"-16, 1 1/4	15
14	-0001115	Guardrail Bolt, 5/8"-16, 1 1/4	15
15	-0001035	Bolt, Cx 5/8"-11x10 0/8" NGR	6
16	-0001035	Bolt, Cx 5/8"-11x10 0/8" NGR	6
17	051-1312100-00	Self-Pneal, 1/4x1/8, GALV	3
18	40000443	W-Beam Guardrail Rivet/2in	4
19	051-1310024-00	NUTTE-CRIMPED POST, SLOTS GALV	1
20	MANUAL	X-Lite Tangent, Installation	1
NOT SHOWN			
SPARES			
21	14100023-RT	X-Lite, Channel, 6x4 Hx 2"	1
22	4001115	Guardrail Bolt, 5/8"-16, 1 1/4	2
23	-0002220	C-Steel Hx 5/8"-11x2 1/2 0/8" Hx 1"	2
24	-0001639	WHP 5/8" P-36, SILVER, NGR	4
25	-0000312	Nut Hx 5/8"-11 0/8" Ngrl	2
26	-0001890	WHP 1/2 P-36, Structural Qn	2
27	051-1310035-00	Bracing, X-Lite, Cable (Front)	1
28	051-1310036-00	Bracing, X-Lite, Cable (Rear)	1
29	051-1310037-00	Bracing, X-Lite, Cable (Top)	1
30	051-1310038-00	Bracing, X-Lite, Cable (Bottom)	1
31	051-1310039-00	Bracing, X-Lite, Cable (Left)	1
32	051-1310040-00	Bracing, X-Lite, Cable (Right)	1
33	051-1310041-00	Bracing, X-Lite, Cable (Top)	1
34	051-1310042-00	Bracing, X-Lite, Cable (Bottom)	1
35	051-1310043-00	Bracing, X-Lite, Cable (Left)	1
36	051-1310044-00	Bracing, X-Lite, Cable (Right)	1
37	051-1310045-00	Bracing, X-Lite, Cable (Top)	1
38	051-1310046-00	Bracing, X-Lite, Cable (Bottom)	1
39	051-1310047-00	Bracing, X-Lite, Cable (Left)	1
40	051-1310048-00	Bracing, X-Lite, Cable (Right)	1
41	051-1310049-00	Bracing, X-Lite, Cable (Top)	1
42	051-1310050-00	Bracing, X-Lite, Cable (Bottom)	1

1. INSTALL SLIDER PANEL FRONT (ITEM 5) TO FIRST W-BEAM GUARDRAIL PANEL USING ITEMS 7, 13 & 16. HEX NUTS TO BE ON TRAFFIC SIDE.
2. INSTALL SLIDER BRACKET (ITEM 6) TO SECOND W-BEAM GUARDRAIL PANEL USING ITEMS 13 & 16.
3. AFTER STEPS 1 & 2 SECURE FIRST AND SECOND W-BEAM GUARDRAIL PANEL USING ITEMS 7, 13 & 16. HEX NUTS TO BE ON TRAFFIC SIDE. IF ROCK OR STIFF SOIL IS ENCOUNTERED, THE POST AND SOIL PLATE MAY BE INSTALLED BY AUGERING AND BACKFILLING THE HOLE. EXTRA CARE MUST BE TAKEN TO PREVENT SETTLEMENT OR LATERAL DISPLACEMENT OF THE POST. BACKFILL MATERIAL SHALL BE COMPACTED TO OPTIMUM COMPACTION.
4. IF ROCK IS ENCOUNTERED, THE SOIL PLATE MAY BE MODIFIED IF APPROVED BY THE PROJECT ENGINEER.

		BARBERS SYSTEMS 180 King Road Suite 100 Fort Worth, TX 76104 Tel: (888) 800-3691 www.barbersystems.com	
UNLESS OTHERWISE SPECIFIED DIMENSIONS ARE IN INCHES. TOLERANCES ARE: FRACTIONS DECIMALS ANGLES ± 1/16 ± .010 ± .010		TITLE X-LITE SYSTEM TANGENT, 50 FT	
APPROVALS DRAWN BY: JMT DRAWN DATE: 08/29/13 APP'D BY: GAD APP'D DATE: 09/06/13		SIZE DWG NO. B SHEET 1 OF 2	
INTERPRET DIMENSIONS AND TOLERANCES IN WRITTEN FORM SHALL PREVAIL OVER DIMENSIONS AND TOLERANCES SHOWN ON THIS DRAWING.		REV. F DATE 08/29/13 SCALE 1:40	

Doc. B100108

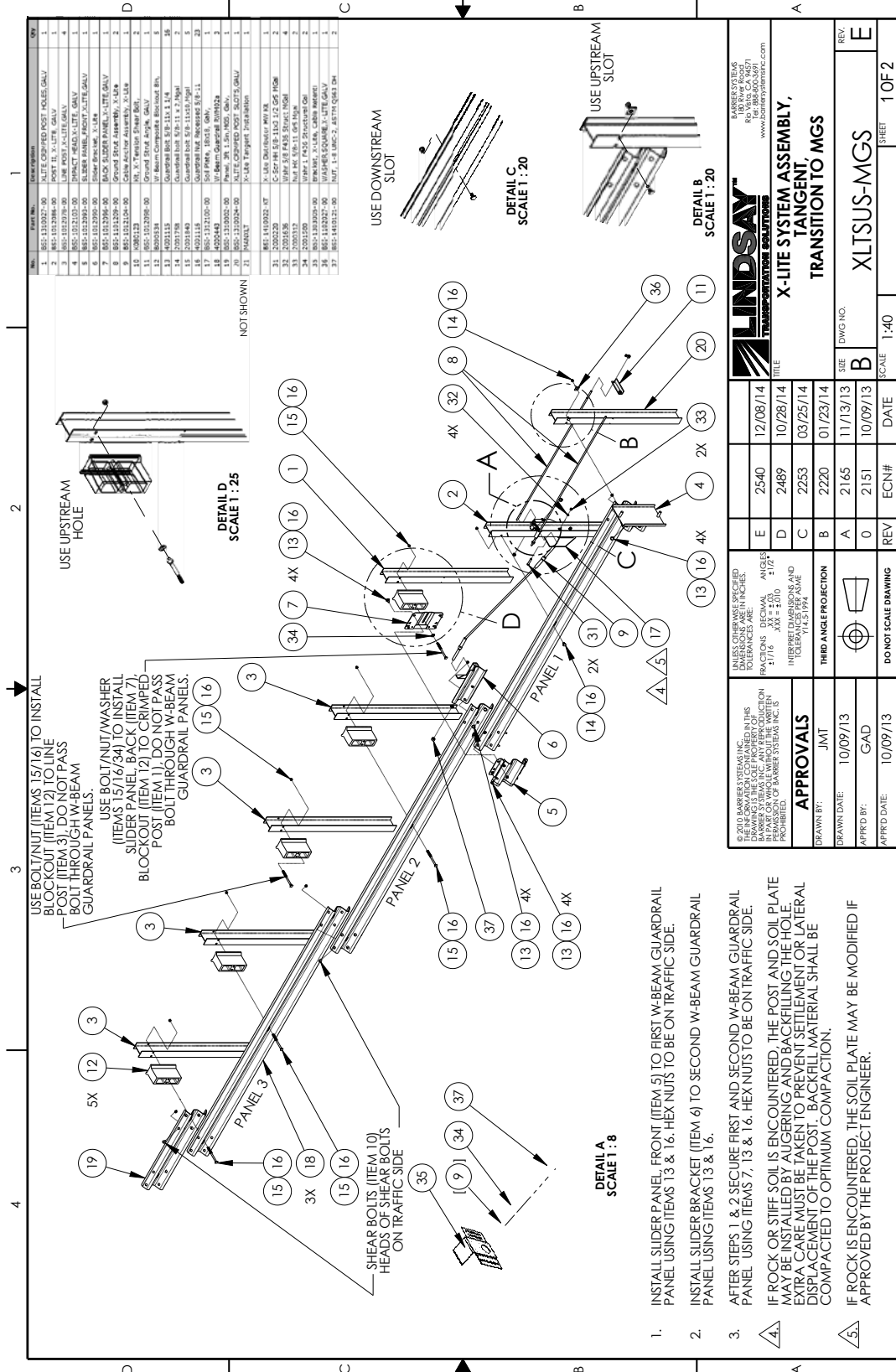
Appendix A - System Configuration, 50'



Appendix A -Bill of Materials - X-Lite Tangent, 50'

Item	Description	Full System	Kit Only
BSI-1310024-00	XLITE,CRIMPED POST SLOTS,GALV	1.00	1.00
BSI-1310027-00	XLITE,CRIMPED POST HOLES,GALV	1.00	1.00
BSI-1012086-00	POST II, X-LITE, GALV	1.00	1.00
BSI-1012078-00	LINE POST,X-LITE,GALV	5.00	-
BSI-1012103-00	IMPACT HEAD,X-LITE, GALV	1.00	1.00
BSI-1012093-00	SLIDER PANEL,FRONT,XLITE,GALV	1.00	1.00
BSI-1012090-00	Slider Bracket, X-Lite	1.00	1.00
BSI-1012096-00	BACK SLIDER PANEL,X-LITE,GALV	1.00	1.00
BSI-1012097-00	Ground Strut, X-Lite	2.00	2.00
BSI-1012098-00	Ground Strut Angle	1.00	1.00
BSI-1012104-00	Cable Anchor Assembly, X-Lite	1.00	1.00
K080123	Kit, X-Tension Shear Bolt,	2.00	2.00
BSI-1102027-00	WASHER,SQUARE,X-LITE,GALV	1.00	1.00
B090534	W-Beam Composite Blockout 8in,	6.00	-
4001115	Guardrail Bolt 5/8-11x 1 1/4	16.00	-
2001758	Guardrail Bolt 5/8-11 x 2"	2.00	-
2001840	Guardrail Bolt 5/8-11 x 10"	6.00	-
4001116	Guardrail Nut Recessed 5/8-11	26.00	2.00
2001580	Wshr 1" F436 Structural	2.00	2.00
4000443	W-Beam Guardrail RWM02a	4.00	-
BSI-1312100-00	Soil Plate	1.00	1.00
2000220	C-Scr HH 5/8-11x3 1/2 Gr5 MGal	2.00	2.00
2001636	Wshr 5/8 F436 Struct MGal	4.00	4.00
2000312	Nut HX 5/8-11 Gr5 Mgal	2.00	2.00
BSI-1303005-00	Bracket, X-Lite, Cable Retenti	1.00	1.00

Appendix A - System Configuration, 37' 6" MGS



APPROVALS

DESIGNED BY: JMT

DRAWN DATE: 10/09/13

APPROVED BY: GAD

APPROVED DATE: 10/09/13

REVISIONS

NO.	DESCRIPTION	DATE
E	2540	12/08/14
D	2489	10/28/14
C	2253	03/25/14
B	2220	01/23/14
A	2165	11/13/13
0	2151	10/09/13

GENERAL NOTES:

1. INSTALL SLIDER PANEL, FRONT (ITEM 5) TO FIRST W-BEAM GUARDRAIL PANEL USING ITEMS 13 & 16. HEX NUTS TO BE ON TRAFFIC SIDE.

2. INSTALL SLIDER BRACKET (ITEM 6) TO SECOND W-BEAM GUARDRAIL PANEL USING ITEMS 13 & 16.

3. AFTER STEPS 1 & 2 SECURE FIRST AND SECOND W-BEAM GUARDRAIL PANEL USING ITEMS 7, 13 & 16. HEX NUTS TO BE ON TRAFFIC SIDE.

4. IF ROCK OR STIFF SOIL IS ENCOUNTERED, THE POST AND SOIL PLATE MAY BE INSTALLED BY ALIGERING AND BACKFILLING THE HOLE. EXTRA CARE MUST BE TAKEN TO PREVENT SETTLEMENT OR LATERAL DISPLACEMENT OF THE POST. BACKFILL MATERIAL SHALL BE COMPACTED TO OPTIMUM COMPACTION.

5. IF ROCK IS ENCOUNTERED, THE SOIL PLATE MAY BE MODIFIED IF APPROVED BY THE PROJECT ENGINEER.

DETAIL A SCALE 1:8

DETAIL B SCALE 1:20

DETAIL C SCALE 1:20

DETAIL D SCALE 1:25

LINDSAY TRANSPORTATION SOLUTIONS

X-LITE SYSTEM ASSEMBLY, TANGENT, TRANSITION TO MGS

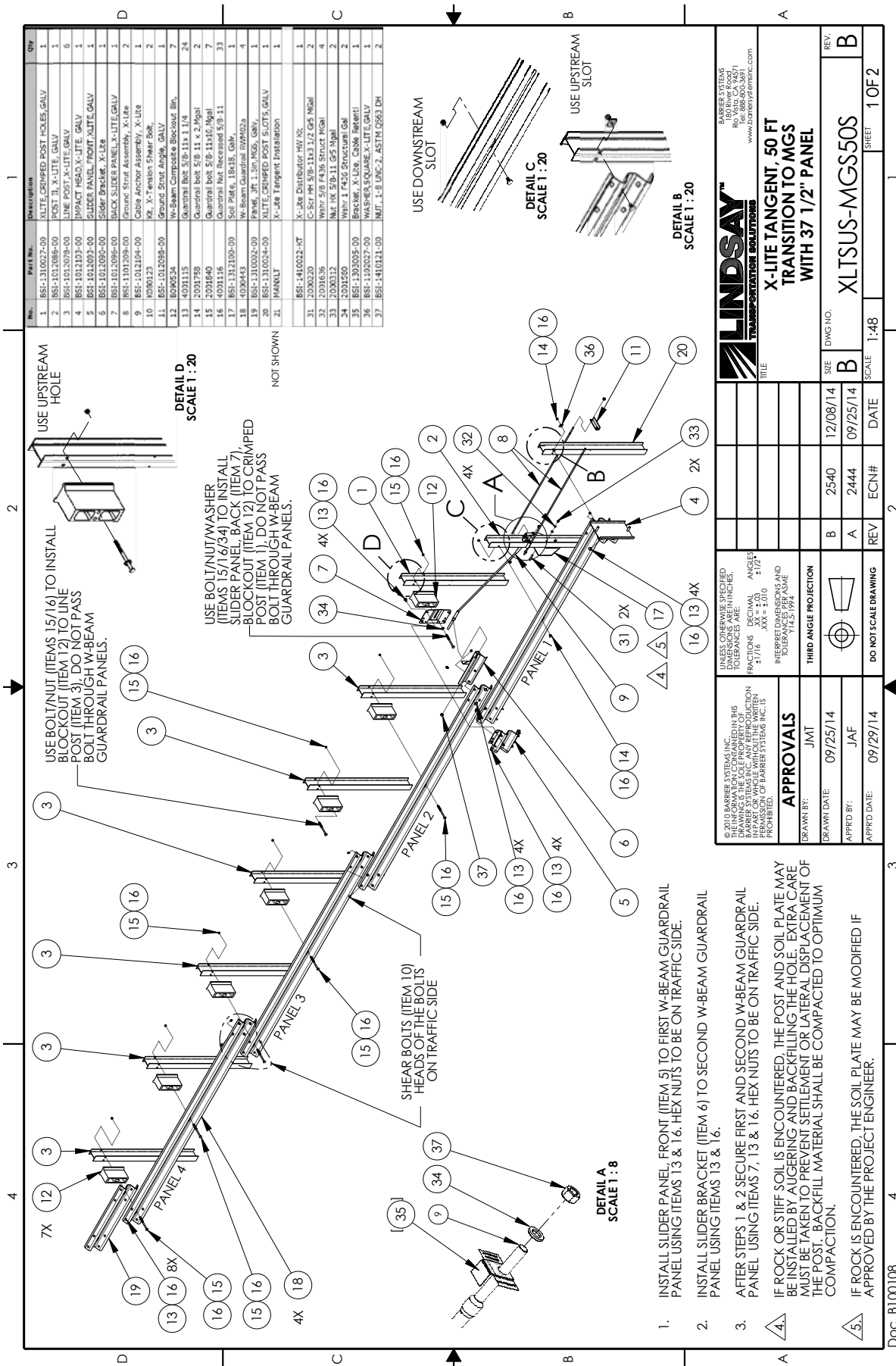
DATE: 10/09/13

SCALE: 1:40

SHEET: 1 OF 2

Appendix A -Bill of Materials - X-Lite Tangent, MGS 37' 6"

Item	Description	Full System	Kit Only
BSI-1310024-00	XLITE,CRIMPED POST SLOTS,GALV	1.00	1.00
BSI-1310027-00	XLITE,CRIMPED POST HOLES,GALV	1.00	1.00
BSI-1012086-00	POST II, X-LITE, GALV	1.00	1.00
BSI-1012078-00	LINE POST,X-LITE,GALV	3.00	-
BSI-1012103-00	IMPACT HEAD,X-LITE, GALV	1.00	1.00
BSI-1012093-00	SLIDER PANEL,FRONT,XLITE,GALV	1.00	1.00
BSI-1012090-00	Slider Bracket, X-Lite	1.00	1.00
BSI-1012096-00	BACK SLIDER PANEL,X-LITE,GALV	1.00	1.00
BSI-1012097-00	Ground Strut, X-Lite	2.00	2.00
BSI-1012098-00	Ground Strut Angle	1.00	1.00
BSI-1012104-00	Cable Anchor Assembly, X-Lite	1.00	1.00
K080123	Kit, X-Tension Shear Bolt,	2.00	2.00
BSI-1102027-00	WASHER,SQUARE,X-LITE,GALV	1.00	1.00
B090534	W-Beam Composite Blockout 8in,	5.00	-
4001115	Guardrail Bolt 5/8-11x 1 1/4	16.00	-
2001758	Guardrail Bolt 5/8-11 x 2"	2.00	-
2001840	Guardrail Bolt 5/8-11 x 10"	5.00	-
4001116	Guardrail Nut Recessed 5/8-11	25.00	2.00
2001580	Wshr 1" F436 Structural	2.00	2.00
4000443	W-Beam Guardrail RWM02a	3.00	-
BSI-1312100-00	Soil Plate	1.00	1.00
2000220	C-Scr HH 5/8-11x3 1/2	2.00	2.00
2001636	Wshr 5/8 F436 Struct	4.00	4.00
2000312	Nut HX 5/8-11	2.00	1.00
BSI-1303005-00	Bracket, X-Lite, Cable Retenti	1.00	1.00
BSI-1310016-KT	Transition Kit, MGS, X-Lite	1.00	1.00



No.	Part No.	Description	Qty
1	BSI-1310027-00	X-LITE CRIMPED POST HOLES, GALV.	1
2	BSI-1012086-00	POST T1, X-LITE, GALV.	1
3	BSI-1012078-00	LINE POST, X-LITE, GALV.	6
4	BSI-1012103-00	IMPACT HEAD, X-LITE, GALV.	1
5	BSI-1012093-00	SLIDER PANEL, FRONT X-LITE, GALV.	1
6	BSI-1012095-00	SLIDER BRACKET, X-LITE	1
7	BSI-1012096-00	BACK SLIDER PANEL, X-LITE, GALV.	1
8	BSI-1101209-00	Ground Strut Assembly, X-Lite	2
9	BSI-1012104-00	Cable Anchor Assembly, X-Lite	1
10	A080123	Kit, X-Lite Shear Bolt	2
11	BSI-1012098-00	Ground Strut Angles, GALV.	2
12	A090524	W-Beam Composite Blockout 8ft.	2
13	A090525	W-Beam Composite Blockout 11ft.	2
14	A090526	Overlaid Bolt 5/8-11, 1.14	24
15	A090527	Overlaid Bolt 5/8-11, 1.0	7
16	A090528	Overlaid Bolt 5/8-11, 1.0	33
17	BSI-1312100-00	Soil Plate, 18x18, GMI	1
18	A090443	W-Beam Guardrail 80M02a	4
19	BSI-1310022-00	Panel, Jt, 1.5m, MGS, GALV.	1
20	BSI-1310024-00	X-LITE CRIMPED POST SLOTS, GALV.	1
21	MANFLT	X-Lite Tangent Installation	1
22	BSI-1410012-KT	X-Lite Distributor HW Kit	1
23	A090620	C-Scr HH 5/8-11x3 1/2 GS Mgal	2
24	A090636	Wtrt 5/8 F436 Struct Mgal	4
25	A090637	Wtrt 5/8 F436 Struct Mgal	2
26	A090638	Wtrt 5/8 F436 Struct Mgal	2
27	A090639	Wtrt 1 F436 Structure Gal	1
28	BSI-1303005-00	Bracket, X-Lite, COMB. HERRITI	1
29	BSI-1303006-00	Bracket, X-Lite, COMB. HERRITI	1
30	BSI-1410011-00	IMP. 1.5-18x3.6, 451T1 0563 DH	1
31	BSI-1410011-00	IMP. 1.5-18x3.6, 451T1 0563 DH	2

		X-LITE TANGENT, 50 FT TRANSITION TO MGS WITH 37 1/2" PANEL	
TITLE		SEE DWG NO.	
UNLESS OTHERWISE SPECIFIED FRACTIONS: DECIMAL ANGLES: TOLERANCES ARE: ±1/16 ±.010 ±.1°		DATE	
INTERPRET DIMENSIONS AND TOLERANCES PER ASME Y14.5-1994		REV	
THIRD ANGLE PROJECTION		SCALE	
APPROVALS DRAWN BY: JMT DATE: 09/25/14		SHEET 1 OF 2	
APPLIED BY: JAF DATE: 09/29/14		PROJECT NO.	
DO NOT SCALE DRAWING		PROJECT NAME	

1. INSTALL SLIDER PANEL, FRONT (ITEM 5) TO FIRST W-BEAM GUARDRAIL PANEL USING ITEMS 13 & 16. HEX NUTS TO BE ON TRAFFIC SIDE.
 2. INSTALL SLIDER BRACKET (ITEM 6) TO SECOND W-BEAM GUARDRAIL PANEL USING ITEMS 13 & 16.
 3. AFTER STEPS 1 & 2 SECURE FIRST AND SECOND W-BEAM GUARDRAIL PANEL USING ITEMS 7, 13 & 16. HEX NUTS TO BE ON TRAFFIC SIDE.
4. IF ROCK OR STIFF SOIL IS ENCOUNTERED, THE POST AND SOIL PLATE MAY BE INSTALLED BY AUGERING AND BACKFILLING THE HOLE. EXTRA CARE MUST BE TAKEN TO PREVENT SETTLEMENT OR LATERAL DISPLACEMENT OF THE POST. BACKFILL MATERIAL SHALL BE COMPACTED TO OPTIMUM COMPACTION.
5. IF ROCK IS ENCOUNTERED, THE SOIL PLATE MAY BE MODIFIED IF APPROVED BY THE PROJECT ENGINEER.

Appendix A -Bill of Materials - X-Lite Tangent, 50' MGS Short Panel

Item	Description	Full System	Kit Only
BSI-1310027-00	XLITE,CRIMPED POST HOLES,GALV	1.00	1.00
BSI-1310024-00	XLITE,CRIMPED POST SLOTS,GALV	1.00	1.00
BSI-1012086-00	POST II, X-LITE, GALV	1.00	1.00
BSI-1012078-00	LINE POST,X-LITE,GALV	6.00	-
BSI-1012103-00	IMPACT HEAD,X-LITE, GALV	1.00	1.00
BSI-1012093-00	SLIDER PANEL,FRONT,XLITE,GALV	1.00	1.00
BSI-1012090-00	Slider Bracket, X-Lite	1.00	1.00
BSI-1012096-00	BACK SLIDER PANEL,X-LITE,GALV	1.00	1.00
BSI-1101209-00	Ground Strut Assembly, X-Lite	2.00	1.00
BSI-1012098-00	Ground Strut Angle, GALV	1.00	1.00
BSI-1012104-00	Cable Anchor Assembly, X-Lite	1.00	1.00
K080123	Kit, X-Tension Shear Bolt,	2.00	1.00
BSI-1102027-00	WASHER,SQUARE,X-LITE,GALV	1.00	1.00
B090534	W-Beam Composite Blockout 8in,	7.00	-
4001115	Guardrail Bolt 5/8-11x 1 1/4	24.00	-
2001758	Guardrail Bolt 5/8-11 x 2"	2.00	-
2001840	Guardrail Bolt 5/8-11 x 10"	7.00	-
4001116	Guardrail Nut Recessed 5/8-11	35.00	2.00
2001580	Wshr 1 F436 Structural Gal	2.00	2.00
4000443	W-Beam Guardrail RWM02a	4.00	-
BSI-1310002-00	Panel, 3ft 1.5in,MGS, Galv,	1.00	-
BSI-1312100-00	Soil Plate, 18x18, Galv,	1.00	1.00
2000220	C-Scr HH 5/8-11x3 1/2	2.00	1.00
2001636	Wshr 5/8 F436	4.00	1.00
2000312	Nut HX 5/8-11	2.00	1.00
BSI-1303005-00	Bracket, X-Lite, Cable Retenti	1.00	1.00

Appendix A -Bill of Materials - X-Lite Tangent, 50' MGS Long Panel

Item	Description	Full System	Kit Only
BSI-1310027-00	XLITE,CRIMPED POST HOLES,GALV	1.00	1.00
BSI-1310024-00	XLITE,CRIMPED POST SLOTS,GALV	1.00	1.00
BSI-1012086-00	POST II, X-LITE, GALV	1.00	1.00
BSI-1012078-00	LINE POST,X-LITE,GALV	6.00	-
BSI-1012103-00	IMPACT HEAD,X-LITE, GALV	1.00	1.00
BSI-1012093-00	SLIDER PANEL,FRONT,XLITE,GALV	1.00	1.00
BSI-1012090-00	Slider Bracket, X-Lite	1.00	1.00
BSI-1012096-00	BACK SLIDER PANEL,X-LITE,GALV	1.00	1.00
BSI-1101209-00	Ground Strut Assembly, X-Lite	2.00	1.00
BSI-1012098-00	Ground Strut Angle, GALV	1.00	1.00
4001116	Guardrail Nut Recessed 5/8-11	2.00	1.00
BSI-1012104-00	Cable Anchor Assembly, X-Lite	1.00	1.00
K080123	Kit, X-Tension Shear Bolt,	2.00	1.00
BSI-1102027-00	WASHER,SQUARE,X-LITE,GALV	1.00	1.00
B090534	W-Beam Composite Blockout 8in,	7.00	-
4001115	Guardrail Bolt 5/8-11x 1 1/4	16.00	-
2001758	Guardrail Bolt 5/8-11 x 2"	2.00	-
2001840	Guardrail Bolt 5/8-11 x 10"	7.00	-
4001116	Guardrail Nut Recessed 5/8-11	27.00	2.00
2001580	Wshr 1 F436 Structural Gal	2.00	2.00
4000443	W-Beam Guardrail RWM02a	3.00	-
BSI-1403002-00	Panel, 15ft 7.5 in, MGS, Galv	1.00	-
BSI-1312100-00	Soil Plate, 18x18, Galv,	1.00	1.00
2000220	C-Scr HH 5/8-11x3 1/2	2.00	1.00
2001636	Wshr 5/8 F436	4.00	1.00
2000312	Nut HX 5/8-11	2.00	1.00
BSI-1303005-00	Bracket, X-Lite, Cable Retenti	1.00	1.00

Page Left Intentionally Blank

Page Left Intentionally Blank

Page Left Intentionally Blank



Lindsay Transportation Solutions Sales and Services, Inc.

180 River Road • Rio Vista, CA 94571 • +1 707.374.6800 U.S. Toll Free: 888.800.3691 • www.barrriersystemsinc.com

Installation manual for the X-LITE Tangent System are subject to change without notice to reflect improvements and upgrades.

Additional information is available from Lindsay Transportation Solutions Sales and Services, Inc. © Lindsay Transportation Solutions, Inc.

X-LITE TANGENT INSTALLATION 01202015 v11